

# State of Wyoming Corner Record

(In compliance with the CORNER PERPETUATION AND FILING ACT, Wyoming Statutes, 1977, Section 36-11-101, et. seq., and the Rules and Regulations of the Board of Registration for Professional Engineers and Professional Land Surveyors)

Reverse side of this form may be used if more space is needed.

Record of original survey and citation of source of historical information (if corner is lost or obliterated). Description of corner monumentation evidence found and/or monument and accessories established to perpetuate the location of this corner. Sketch of relative location of monument, accessories, and reference points with course and distance to adjacent corner(s) (if determined in this survey). Method and rationale for reestablishment of lost or obliterated corner.

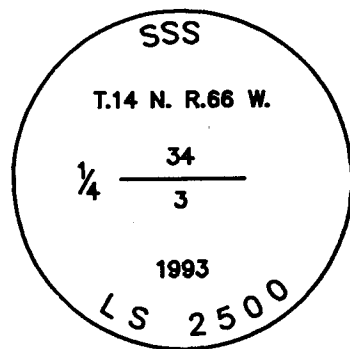
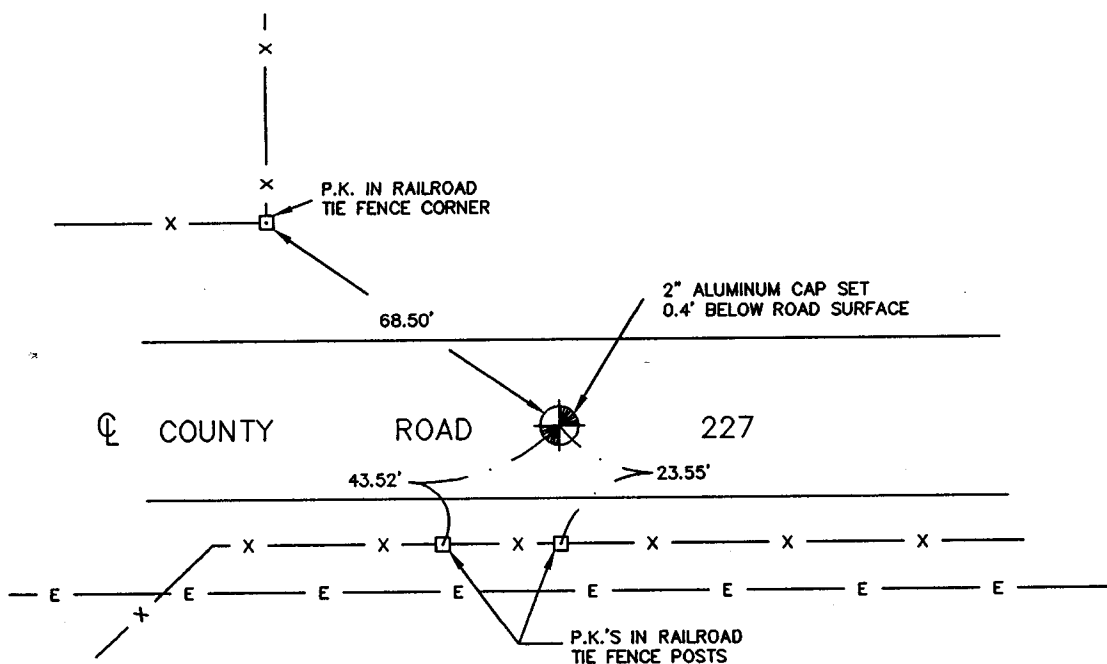
FOUND: NOTHING

SET: 2" ALUMINUM CAP ON 5/8" X 24" REBAR DOWN 0.4' IN  
 CL OF THE COUNTY ROAD AT THE MID-POINT BETWEEN THE  
 SW & SE CORNERS OF SECTION 34 ON LINE WITH FOUND  
 CLOSING CORNERS OF SECTION 3. STAMPED AS SHOWN.

REFERENCES: SET AS SHOWN.

G.L.O.: LIMESTONE (16" X 10" X 8")

173856  
 LARAMIE COUNTY CLERK  
 CHEYENNE, WY.  
 95 DEC 13 PM 3 55



Date of Field Work: 6-11-93 Office Reference: 93100

Firm/Agency, Address

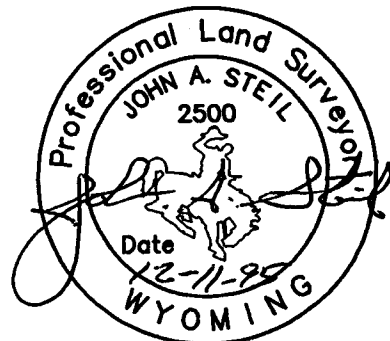
**STEIL SURVEYING SERVICES**

**1102 WEST 19th STREET**

**CHEYENNE WY 82001**

Telephone Number: (307) 634-7273

This corner record was prepared by me or under my direction and supervision.  
 SEAL & SIGNATURE



CROSS INDEX DIAGRAM

1	2	3	4	5	6	7	8	9	10	11	12	13	14	15	16	17	18	19	20	21	22	23	24	25		
A																									B	
B																										C
C	6	5	4	3	2																					D
D																										E
E																										F
F																										G
G	7	8	9	10	11	12																				H
H																										I
I																										J
J																										K
K																										L
L	18	17	16	15	14	13																				M
M																										N
N																										O
O																										P
P	19	20	21	22	23	24																				Q
Q																										R
R																										S
S																										T
T	30	29	28	27	26	25																				U
U																										V
V																										W
W																										X
X	31	32	33	34	35	36																				Y
Y																										Z
Z	1	2	3	4	5	6	7	8	9	10	11	12	13	14	15	16	17	18	19	20	21	22	23	24	25	

**BOOK 1413**

Corner Name: 1/4 CORNER Section: 3,34 T.17 N.R.66 W.; 6TH P.M. Cross-Index No.: Z-15  
 SBRPEPLS/PLSW: March 1994

0507